



UMSL | University of
Missouri—St. Louis

2021 Campus Plan Report

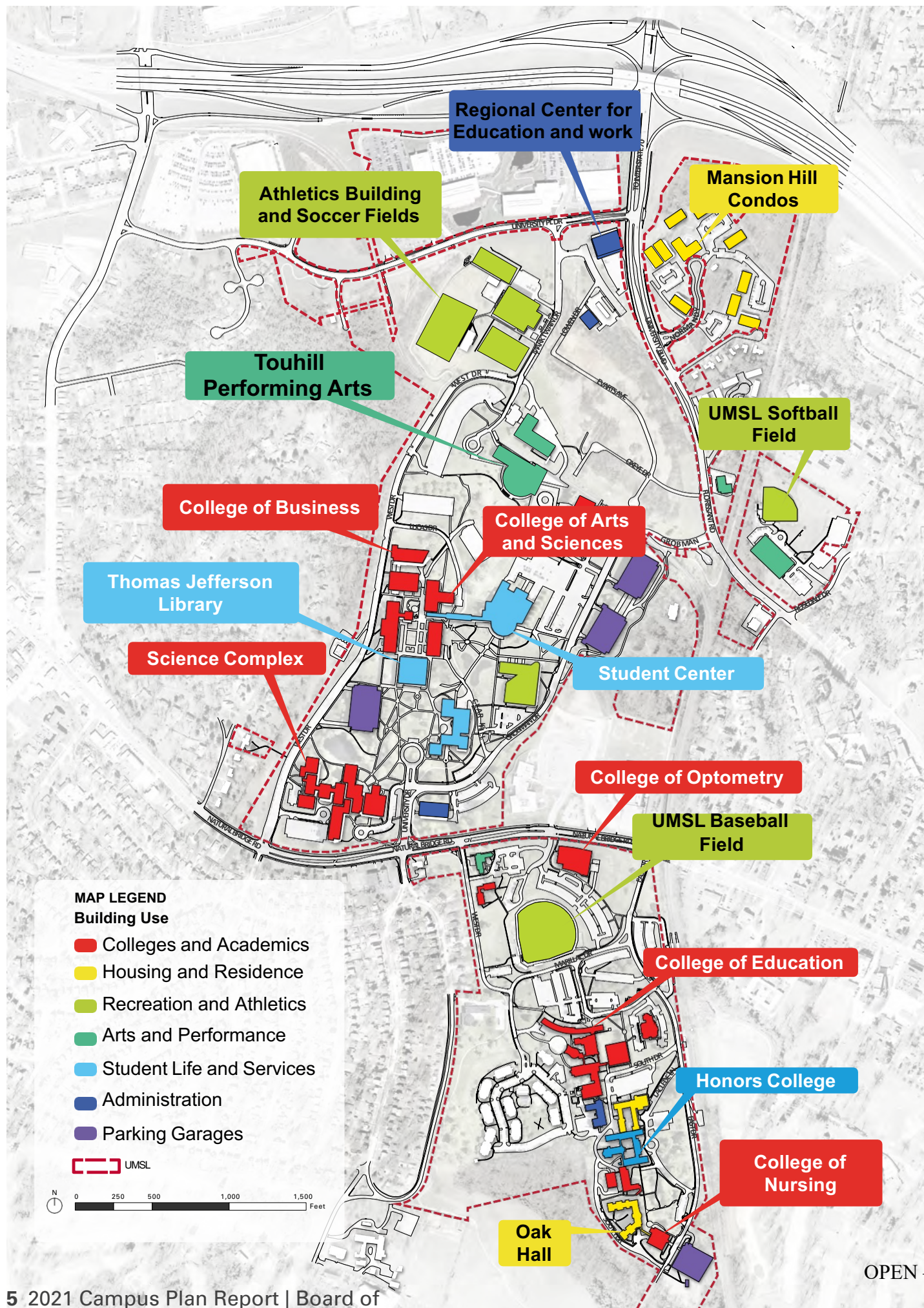
Board of Curators Presentation

November 2021

UMSL Context in the Community



- Strong relationships to the surrounding residential communities
- Strong connectivity to St. Louis Metro via adjacency to two MetroLink stations and major regional highways.
- Build upon UMSL's role in Local + Regional Context.
- Primarily within the City of Normandy and the Village of Bellerive Acres in North St Louis County
- Campus has connections to major destinations including the St. Louis Lambert International Airport and Downtown St. Louis.
- Immediate campus context is primarily residential neighborhoods with commercial uses
- Alignment of development opportunities on campus with the character and needs of the community.



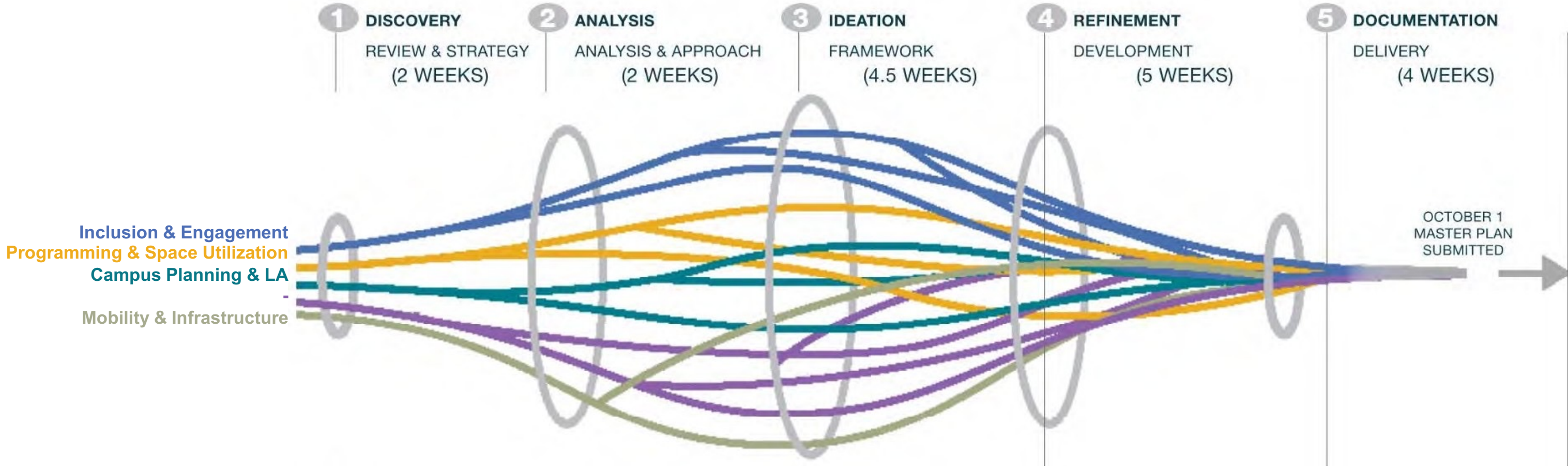
Where We Are Now

- The campus has too many outdated, sparsely populated facilities located across an area larger than optimal for sustained excellence.
- The existing facilities on campus show a scattered pattern of uses developed over decades of property acquisitions. A clearly better pattern is the clustering of academic spaces and academic support on the North Campus.
- Future change will aim to cluster complimentary uses to enhance the benefits from co-location and creative synergies between programs and community partners.



November 18, 2021

Master Plan Process Engaging the UMSL Community

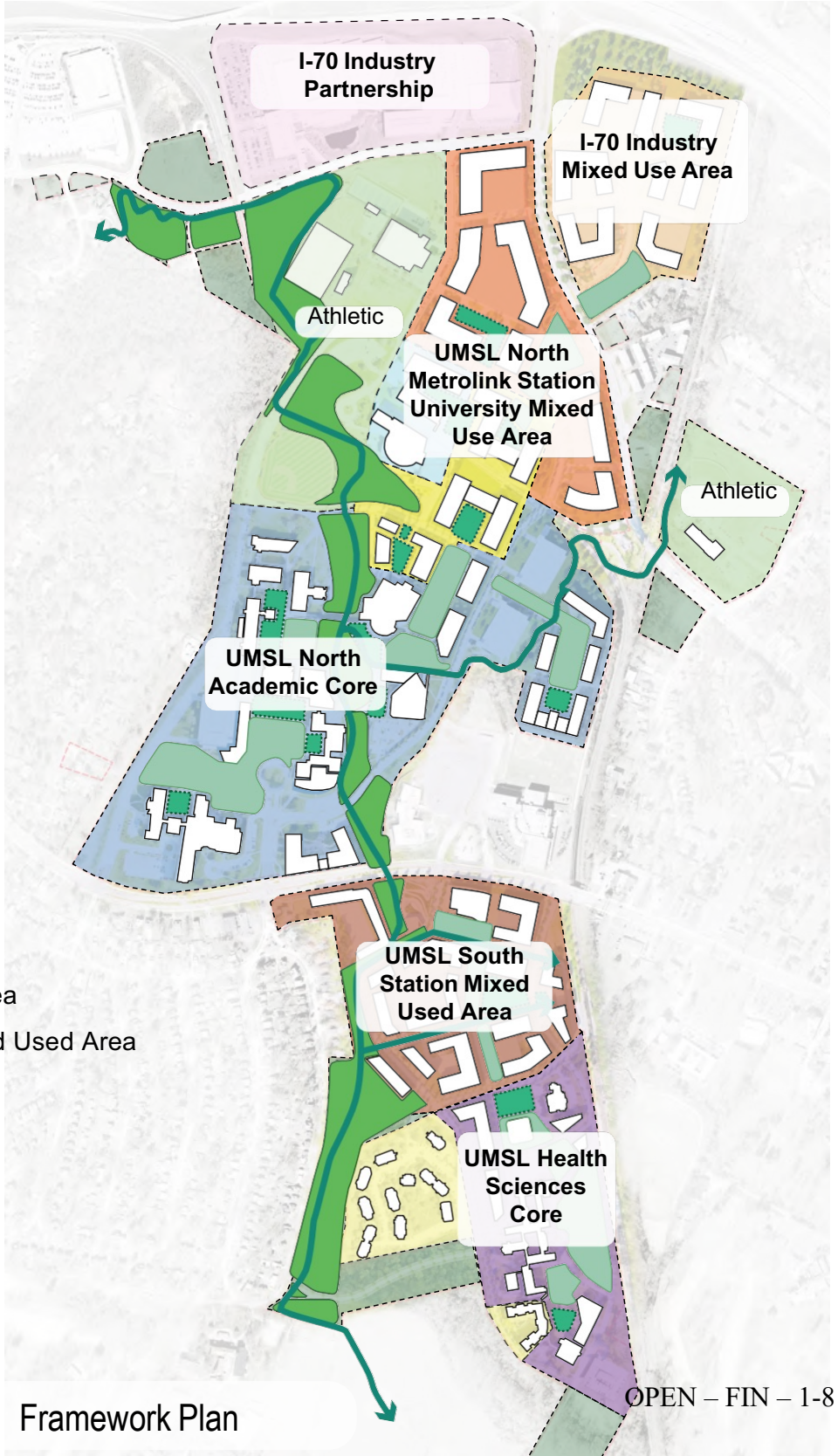


Key Drivers of Change

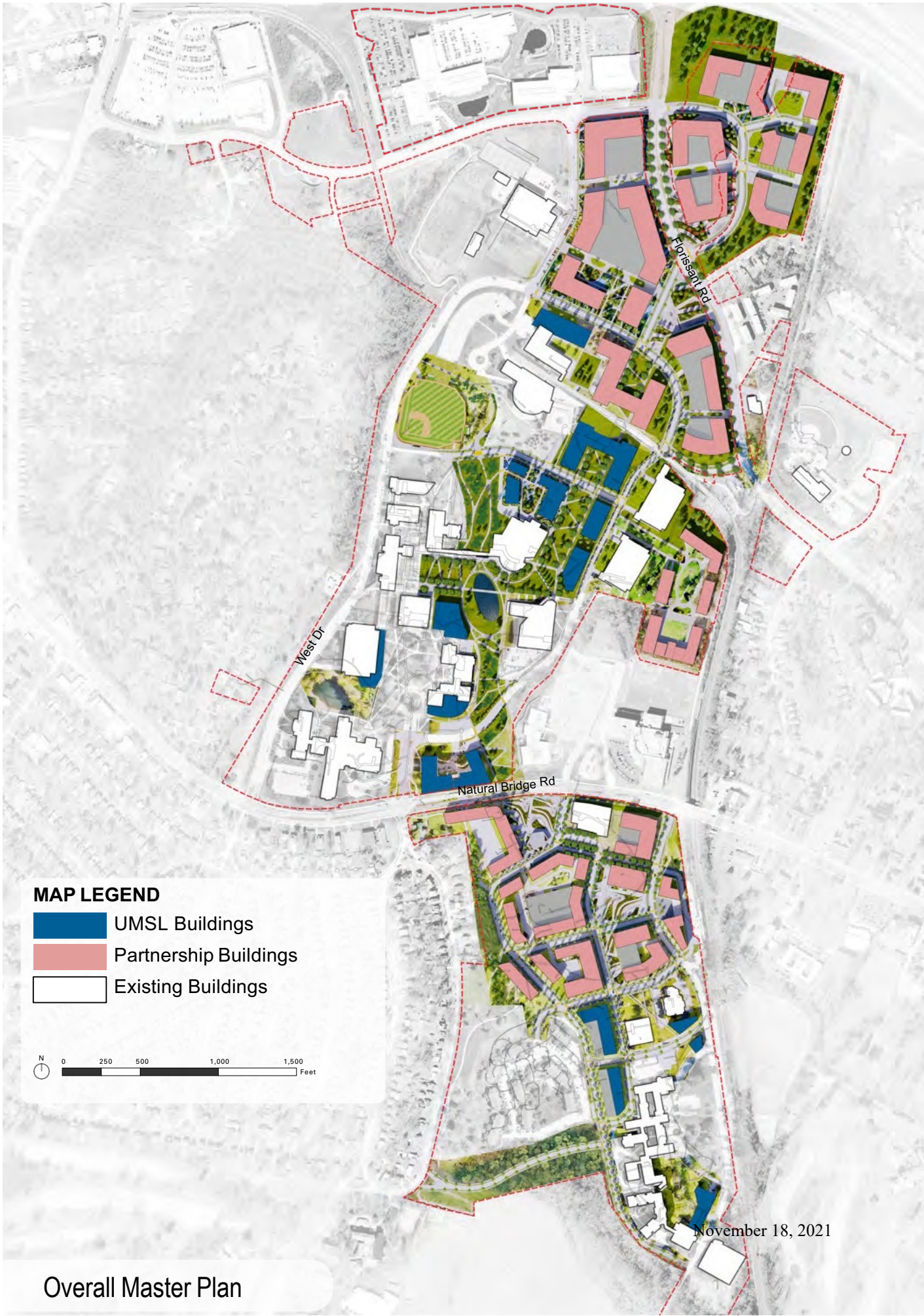
An aerial architectural rendering of a modern university campus. The scene features several large, multi-story buildings with flat, green roofs. A central area is dominated by a large, circular pond surrounded by lush green lawns and numerous trees. A network of paved walkways winds through the campus, with small figures of people walking along them. The overall atmosphere is bright and green, suggesting a focus on sustainability and a walkable environment.

1. Consolidate most academic uses on the North Campus to create an academic core
2. Pursue strategic decommissioning
3. Focus growth in the right location
4. Leverage underutilized assets for repurposing
5. Identify future community partnerships to enhance campus life

Overall Master Plan



Framework Plan



Overall Master Plan

Consolidation and Leveraging Assets

University led plans for changes to UMSL facilities is a starting point to inform further transformations as outlined in the Campus Plan.

Demolish

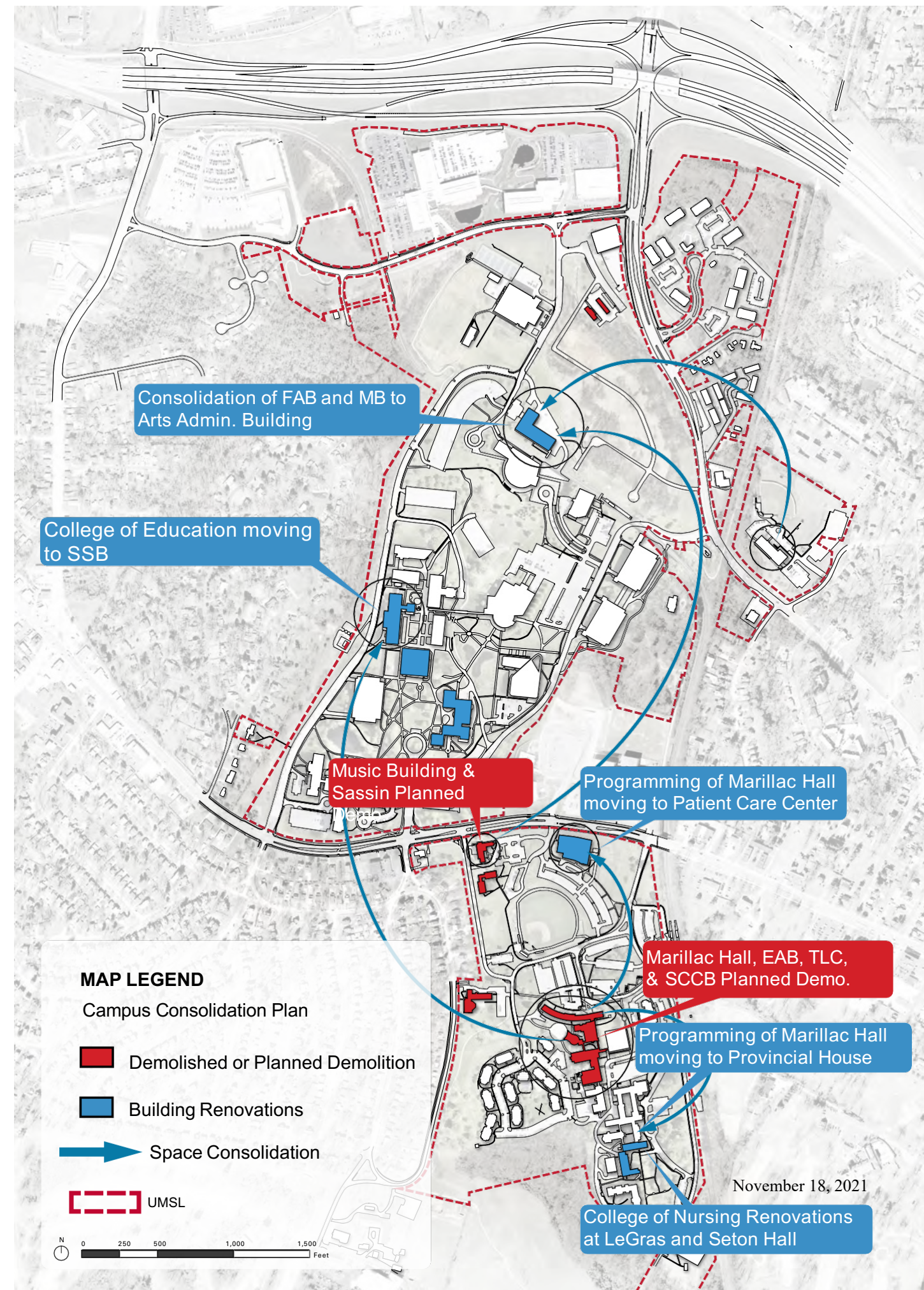
- Bellerive Hall
- Marillac Hall
- Post Office
- Music Building
- Sassin Building
- Education Administration Building
- Technology and Learning Center
- South Campus Classroom Building

Sell

- Link Houses
- Normandie Hall

Renovate

- Arts and Administration Building
- Patient Care Center
- Social Sciences Building
- Thomas Jefferson Library
- Seton Hall
- Le Gras Hall
- Provincial House



North County Business and Workforce District



Aerial Looking South

OPEN - FIN - 1-10

November 18, 2021

